

Make a jointed doll .1.

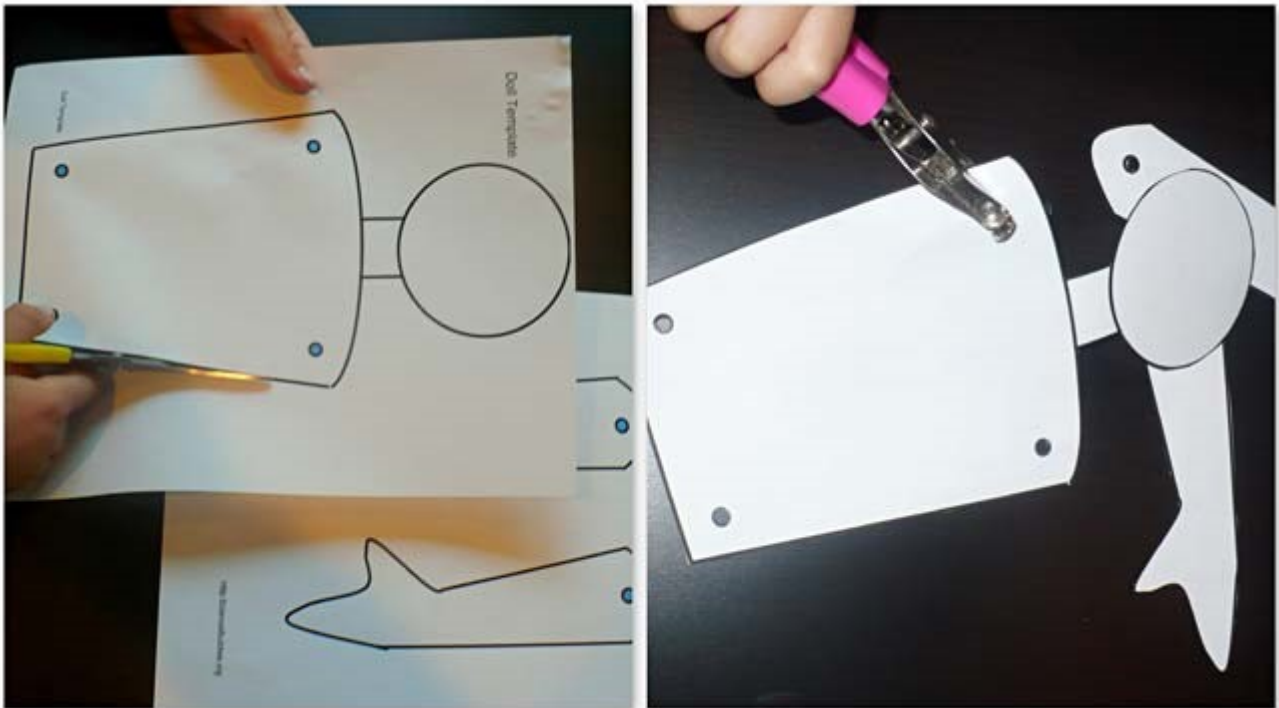
You will need:

A printed template downloaded and cut out.

Cardboard from a cereal packet

Paper clips or wool

Hole punch



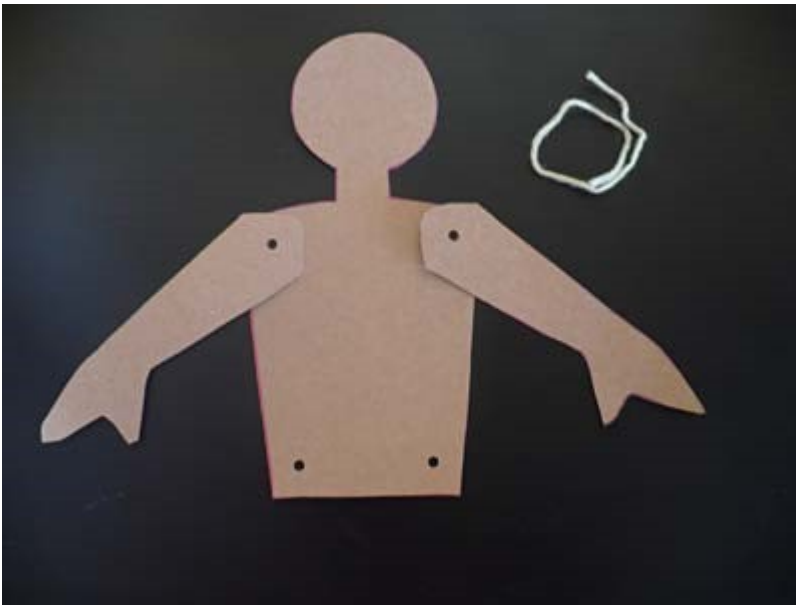
Cut out the template and the holes.

Put onto the card board and draw around the shapes.

REMEMBER turn the leg and arm over and draw the other leg and arm.

Cut out the cardboard shapes and punch the holes

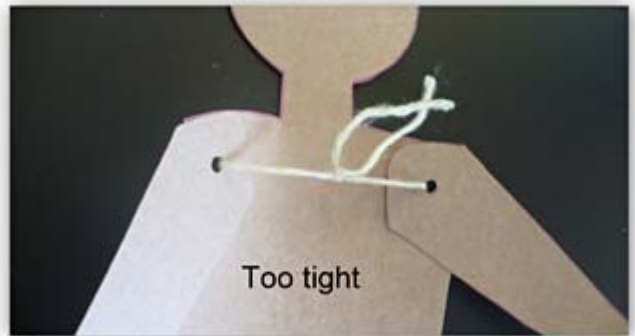
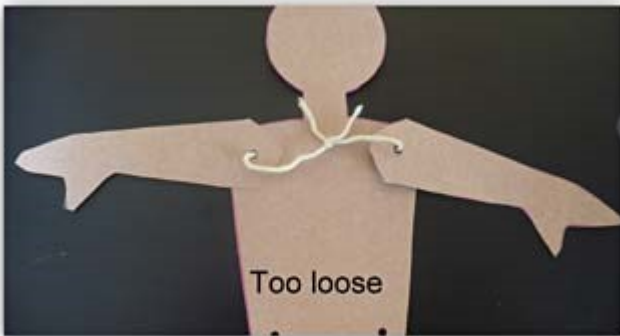
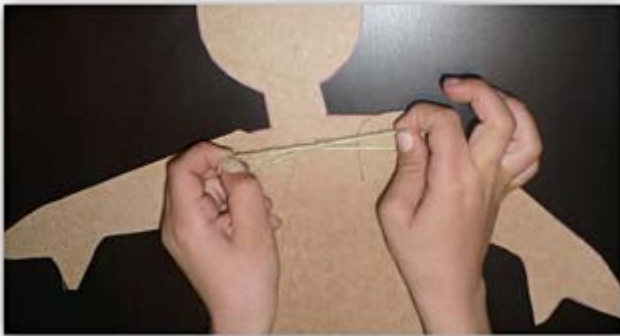
Online Resources



Line up all the holes.

If using wool tie the arms together.

Use the diagrams below to see how to tie them.



Tie the legs the same way.

If you use paperclips, make sure to flatten the backs.



Online Resources

Decorate your doll with wool and material or use felt tips to colour them in.

