

Caslon Way, Letchworth Garden City file note 1955

Sites L.G.Iu Block 8, W.3 right : No. [10] Caslon Way, Grange Estate

Ref: Herts O.S. 6" VII. N.E.

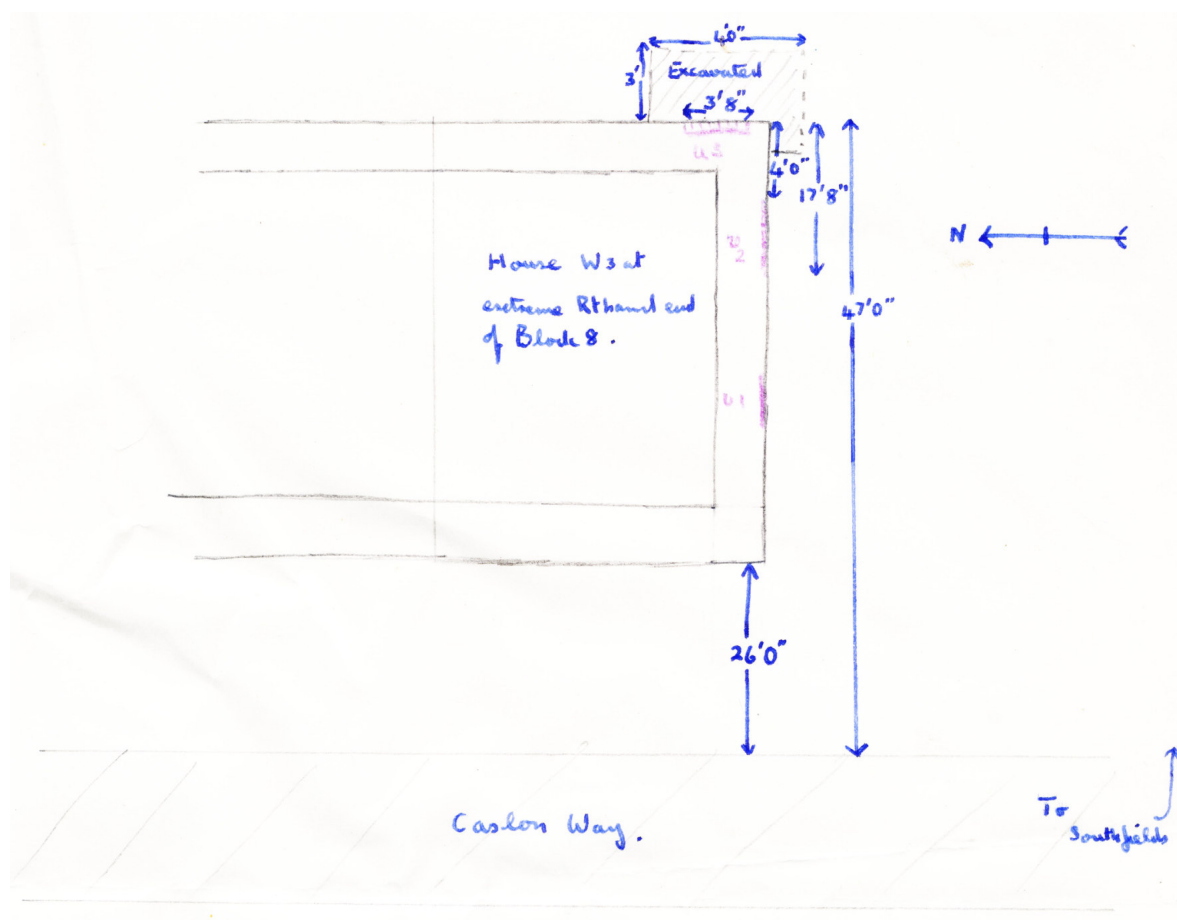
Finds were reported to the museum on 25th November, 1955 by Mr Richardson, Clerk of Works, Grange Estate, Letchworth. These finds were made by workmen digging house footings for the Garden City Press Ltd group of houses. The depth at which they were discovered was not recorded at the time but from the depth of the trench c. 2'6" they were probably from between 1'6" and 2'6" down.

An inspection of the site was made the same day and three patches of dark earth were visible on the side of the trench where they had been cut through by the workmen.

- u1 Nearest the road and yielded dark grey reeded pot ? c.50 A.D.
- u2 Fragments of buff jug and pinkish buff shell gritted cooking pot or storage jar ? late 1st century.
- u3 Fragments of samian ware bowl F. Drag37 ? Antonine. This was very weathered indeed and had obviously lain in the open for some time in antiquity judging by the deposit which coated it.

Animal bones (ox) together with 1 pre-molar.

On 29.11.55 it was possible to excavated at u3 by digging out from the edge of the trench a cut of 3' x 4' behind the concrete put into the trench on the previous day. Natural soil was reached at 3'6". Only one fragment of samian ware was found and this showed an ovolo design and was part of the above mentioned bowl. An oyster shell occurred at 2' 4".



Pottery markings are L.G.I. and u = unstratified