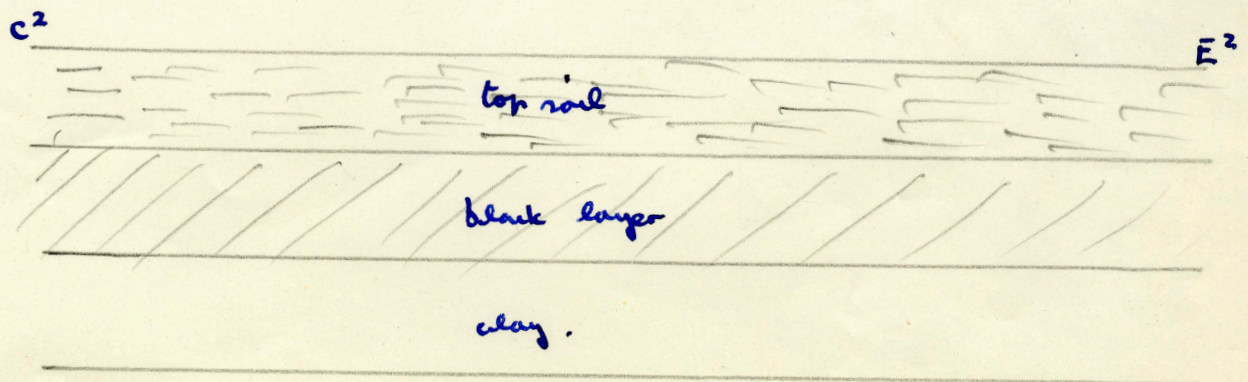
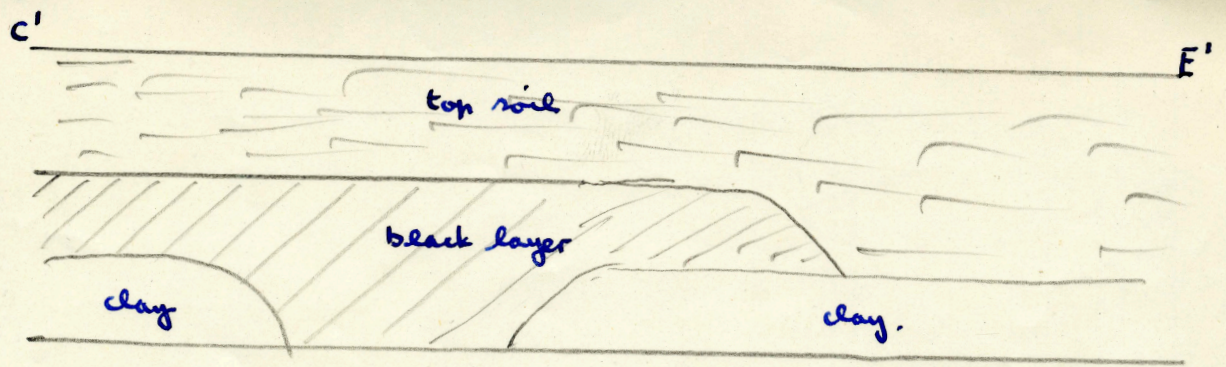


Section B.D. showed only clay throughout : no more occupation layer.



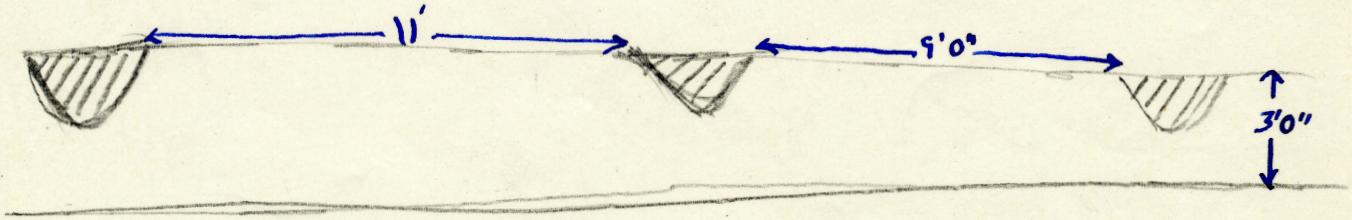
N.B. The black layer c 9" deep spreads across the house from A.1, E.1., C.1 over the ewstern half of the plan reaching to the front of the house also.

A deerhorn handled iron knife with a triangular shaped blade was found by the workmen digging out the footings from u 1.

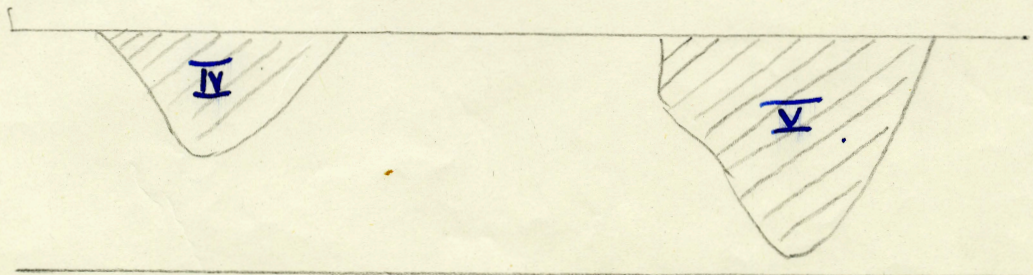
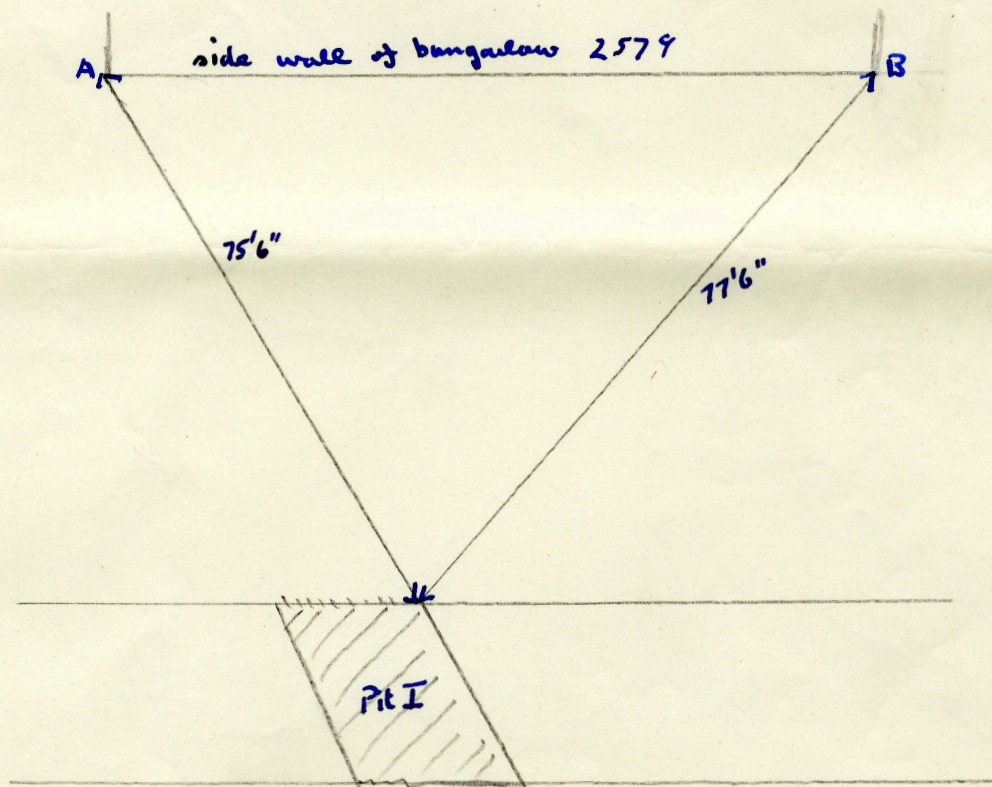
The stones from B3 were burnt red right through to the core and were probably from a hearth.

There were no finds from the area E1, F, C1, D ,

Three V - shaped pits showed in section in a deep trench for water and sewerage pipes on the E. side of Hawthorn Hill above the 250 ft contour line (now known as Wheat Hill)



The pits do not match as to position across each trench, especially IV and V which might almost be two separate pits i.e. IVb and Vb. Unstratified pottery also from Pit VI. Here is no trace of such a pit in section in the trench and also unstratified VII which is ? from a parallel trench to E again of IVb and Vb.



Sections visible in deep trench cut to take water and sewerage pipes
all finds ~~stratified-but-localized-~~ unstratified but localised.

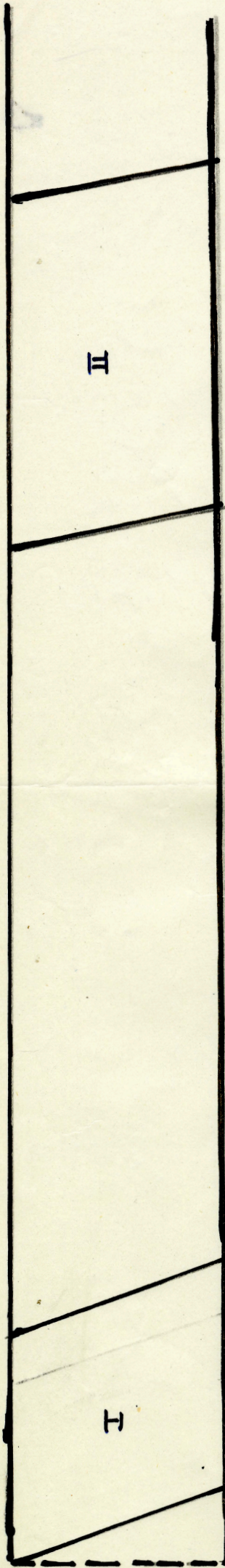
Pit I 1'2" - 3' x 2' - 3" wide - in black soil.

Finds - large fragt (broken) with slashed rim, dark brownish, burnt black in patches, slightly gritted, well sanded, roughened exterior. Scored vertically. Flat rim nail indented. Well devolved shoulder and upright rim neck. Smooth interior "Eggington" ware though a more advanced type.

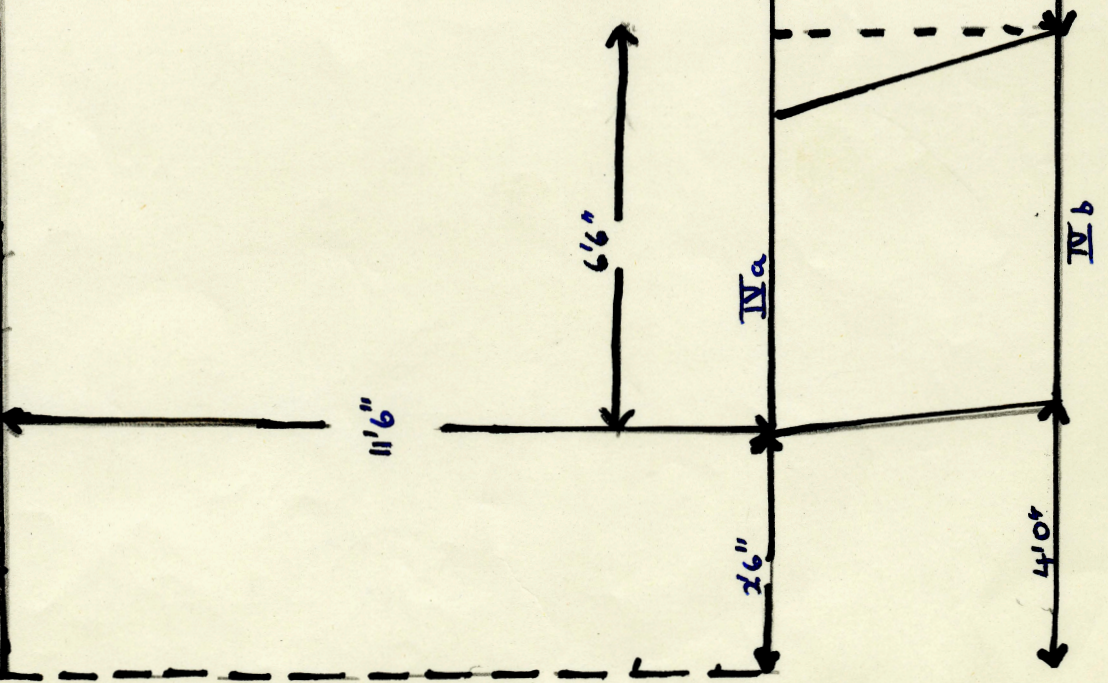
Fragt. dark greyish brown smooth ware (with grits).
Small base fragt. joint not visible, very slight bend flat underneath.
Burnt red with black core of grit and sand.
Several dark grey fragts with small grits.

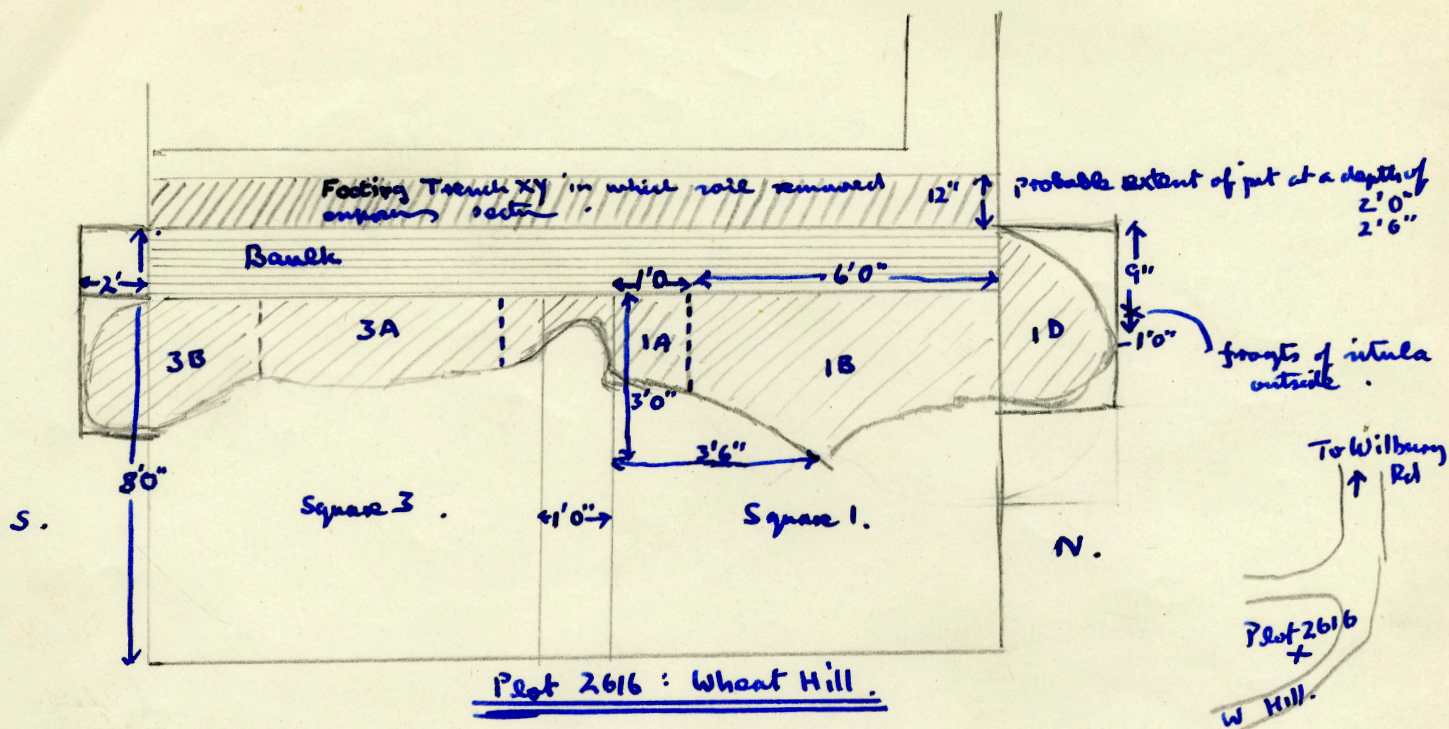
Bones - rib of cow and long bone.

Pit II c.1'8" deep x c.6'6" wide.



HAWTHORN HILL Site XIII: Copy of scale plan not to scale.



Trench xy.

Dug out by builders. On the bottom of the trench scraping showed a patch of silt filling up to 12" wide and about 6" deep. This indicated the most westerly extent of the habitation. The same dimensions also showed in the section in the corner of the trench by square 1.

0' - 8" of bank was removed in Square 3 (in two operations) because it contained a silt layer which had extended into Trench xy, the section already observed.

- 3B. This was rounded and 3 ft in length (occupying a position 5' - 8' along the section across Square 3) with a southward extension into the Southwest corner of about 2'0 square. This rounded end was at an angle to the bulk section and here was no sign of the silt layer in section xy.

At the Northwest corner of Square 3 adjoining 1A, the layer of silt narrowed in width to 9" and a large amount of smashed pot and animal bones was found lying immediately to the south of this under the baulk (occupying the position 0' - 5' of the section).

- 1D. The northwest extension of Square 1 was also 2'0" square. The layer of silt representing occupation, however, did not extend through into 1C which lay 9" E of the west baulk and about 1'0" to the South of 1D. It must therefore be regarded as lying outside the habitation.

Pottery Notes. One fragt. heavy pinkish buff with large grits from 3A which joins one fragt from 1B. Some unstratified material from tips also joins in. Fragt. from 3A of round food vessel with weak shoulder, brownish blaware which joins 3A. Fragt. 1A (27th) heavy pinkish buff joins with fragt. 1B (28th) double layered (laminated fabric).

- Square 1 A. from S.W. corner in hollow leading to narrow gully, in damp black silt filling : with knife handle :.
 27.iii.56. pottery from top of layer
 bones " " " "
- 29.iii.56 pottery from baulk abutting central gully and S.W. corner cf. 3A. Bones.
- Square.1B. from N.W. corner and central gully in dark silt
 26.iii.56. and 27.iii.56 Pottery and bones from top of layer.
 28.iii.56. Pottery and bones from lower part of layer.
- Square 1C. from beyond N.baulk in silt resting on natural clay I.E. immediately outside N. end of occupation hollow
 3.iv.56. Pottery and bones from an isolated position.
- Square.1D. from extension at N.W. corner into N.baulk but not joining with 1C : rounded corner of habitation
 29.iii.56 Pottery and bones.
- Square 3A. from W.baulk at N.W. end in narrow gully in damp black silt - very fragmentary and heaped together.
 28.iii.56. Pottery. 29.iii.56 Pottery and bones from 0'5'.
 30.iii.56. Pottery and bones from 5'8'.
- Square 3B. from S.W. corner in damp black silt with burnt (pink) cobblestones one or two chalk lumps and flint = rounded corner of habitation.
 27.iv.56. Pottery and 1 fragment of bone. 28.iii.56 pottery and bones. 29.iii.56. In an extension pottery from the top of the layer and bones.
- Trench XY the front footing trench for a bungalow, running N to S cutting longwise along the western edge of the habitation destroying the western outline of the hollow to within 6" of the natural clay bottom. There were no traces of disturbance (dark silt in the W. section but a layer of dark soil appeared in the E. section for c.12" from the top(N.W.) end of the trench which was 10/12" thick. A fragment of pottery dug from the N,W, corner allowed identification of the sectio as belonging to an Iron Age A habitation site.
 29.iii.56. Further investigation by scraping the floor of the footing trench showed that the hollow must have been extending westwards for about another 12" x 6" deeper into the natural yellow clay. Total depth of bottom of the hollow about c.2'8" from present ground level (on W. side).

Square.3B. from the S.W. corner in damp black silt with burnt cobbles ? rounded corner of habitation pit.

- 27.iii.56. Top of layer :
 (1) Rim fragment : hard, thick, dark brown, burnt core, fairly free of grit, some sand lightly tooled surface, evidence of hand working, rolled rim, good shoulder.
- 29.iii.56. Extension - top of layer :
 (2) Fragt. Egginton Ware : light buff brown, several large grits, thick and burnt black on inside half of section, scored with rounded implement (? bone) and three same were not incised.
 (3) Rim fragt muddy brown, water smooth but not polished burnt core, no grits, small round hole above shoulder but does not penetrate thro'. 1 fragt. burnt dark grey, few grits, hard polished smooth.
- 28.iii.56. A) Rims. (4). light grey brown burnt dark grey, sand and smaller grits but water smoothed(not polished), burnt core pitted surface due to loss of grits etc : top of rim rounded.
 (5). Thick orangey-brown ware burnt dark grey, evidence of handworking few grits but worked smooth externally (had been ~~XXXX~~ scored vertically but irregularly. On this fragt. is impression of only one thumbnail or of bone tool on shoulder.

(11)

Pottery from Hawthorn Hill (continued).

- (6). Well but finely gritted though water smoothed externally and internally slight polish.
Muddy brown to dark grey brown, thickened rim, heavy, straight side, curved top to rim, very well made.
- (7) Muddy brown, slightlyvgritted, moderately smooth surface but not tooled, nail incised across top of semi-flat rim.

B. Bases. (8). Slightly beaded, muddy brown burnt dark grey, water smoothed, no joint visible, few grits.

- (9). orangey brown surface, burnt black throughout, some large grits, sandy, brick like texture.

Square 3A. 28.iii.56, From W. baulk at N.W. end in damp black silt.

A) Rims : (10) Large fragt dark grey / black, few grits, polished s smooth with tool, pitted due to a few pieces of grass, shoulder we well shaped, finger marks visible, top of rim very beaded and convex.

- (11). Thick dark brownish/grey, polished smooth, everted rim, well rounded pitted surface.

- (12) Reddish brown, well gritted ware with line medium rough external, slightly everted flat rim.

- (13) Buff brown well gritted, moderately brown externally, bevelled inwards.

B) Bases : (14). large fragt medium brown / grey danded and gritted ware, fine rough exterior, beaded, flat, smooth internally, pitted traces of grass cuttings.

29.iii.56. From W. baulk at N.W. end in narrow gully in damp black silt 0'/5'.

- (15). c. Half a pot with rim and base - light pinkish buff burnt black in parts, well sanded yet fine smooth surface, few grits. Rim is very slightly rounded and flat and base is slightly rounded and flat.
Height : 4 -6". Diameter : c.3.5".

A) RIMS.

- (16). Fragt. smooth, with a few grits, polished, muddy brown, devovved situla with grass pitted surface, slightly everted rim flat, finger working visible. Thick in section.

- (17). Buff/ orangey red due to incomplete firing burnt black in patches very thick, very large grits including quartz and chalk, wide flat rim irregularly incised across the whole width ? with thumbnail. Sanded externally and moderately rough.

- (18). Dark grey, smooth, thick, well rounded rim, bevelled outwards, sandy, few grits.

B). Bases. (19). Large fragt brownish burnt dark grey in patches, very thick and heavy with ungritted but rough surf ce, in places grass pitted and the appearance of we=athering., slightly beaded, base rising slightly in the middle but not enough to be called "ompholoid".

Square 3A.
30.iii.56. From W. baulk in Square 3 at N.W. end in damp black silt 5'/8'.

- A) RIMS. (20). medium buff burnt black, quartz grit and sand, fine, grass pitted, flat topped.
(21). Reddish brown, smooth, fine grits, roundtop.

RIMS. (cont.). (22). dark buff burnt black with very fine grits . smooth exterior, slightly sanded, slightly everted, flat topped.

(23). Dark grey very smooth, u even flattish top.

24). Dark reddish brown, smoothed, evidence of finger working, rim folded over to form roll type of rim, top flattened. There were two of these the other being dark grey.

(25). Grey buff burnt dark grey, smoothed, tiny grits, folding over of rim not so obvious.

One fragment like 3A 10 above.

B) BASES. (26). Brownish buff burnt black on inside, large flint grits, sanded but moderately smooth externally, pitted in places, slightly beaded very thick fabric.

Square 1 A. from S.W. corner in hollow leading to narrow gully running into area known as Sq.3A in damp black silt filling, associated with knife handle.

27.iii.56. top of layer.

A).RIMS. (27). Muddy brown/grey gritted and sanded ware, grass pitted medium rough exterior, softish ware, rim well curved, tapering to steep line along which edge of shoulder barely perceptible , grey core, well made.

(28). Buff burnt, dark grey on exterior with grits which dont appear on surface, sanded fine, smooth, evidence of finger working on top of the rim which is uneven.

(29). Dark grey, danded, medium thickness of core, smooth, beaded rim.

B.BASES. (30). Very dark reddish buff, grey core, very thick, gritted to smooth surface, sanded, slightly beaded.

also 1 very thick fragt. very smooth and polished, buff, burnt dark grey, few grits.

1 fragt. thin dark grey shoulder fragt, slightly polished, very smooth and slightly sanded tho' not on surface.

1 fragt of burnt purplish buff, well gritted and sanded, mid rough very thick core section, grass pitted, fits with small fragt. from 1B. 27.iii.56. and also from 1B 28.iii.56.

Also large fragt. purplish- red/ dark grey sanded ware, rustic exterior few grits, hard thinnish core section fits with frags from 1B(26.iii)

29.iii.56. from baulk in Square 1, abutting central gully and S.W. corner in silt.

No rims or bases, frags only of same purplish grey ware, gritted and sanded, very thick core section as from 1A(27.iii.56) and 1B(28.iii).

Site 1B. from N.W. corner Square 1. :below yellow clay and gravel, also small frags of sandstone with burnt core ? crushed and added to pottery clay to give good body. 1'2" down.

26.iii.56. top of layer. no rims or bases frags only of darkish purplishred grey sanded ware, few grits, rustic surface, hard ware, thinnish core section. 1 fragt of pinkish buff, flint gritted ware, burnt dark grey core, med smooth surface.

These fit together with large fragt from 1A (27.iii.56).

27.iii.56. from N.W. corner and central gully running towards 3A, in dark silt top of layer.

A) RIMS. (31). Pinkish buff - well burnt, gritted and sanded ext, well defined shoulder , slightly curved rim, well rounded, faint traces of finger working ? nail slashed across top of rim, sooty ext and rather uneven.

Site 1B (cont) 28.iii.56. lower part of silt filling from N.W. corner and control gully with two small flint flakes.

A.RIMS. (32) Orange buff burnt black in places, very hard and thick with extra large limestone, chalk and flint grits, sanded, medium rough exterior, shoulder , neck curving slightly inwards, rim slightly bevelled. Fits with fragt from 3A.

Shoulder fragt. muddy buff burnt black, gritted and sanded fine texture, hard med. thick core - slightly scored body (not internal pattern). Large fragment sandy buff burnt core, very thick in two layers gritted and sanded, fine rough texture, fits with fragt from 1A(27.iii.56)

Site 1C. from beyond (NY) N baulk of Square 1, 9" from N.W. corner in silt resting on natural yellow clay, immediately out side N. end of habitation therefore the deposit didn't connect with 1B.

3.iv.56. pottery lying compactly together, smashed rather badly, layer upon layer.

A) RIMS. (33) Orange buff, burnt core and in patches on body, hard gritted, some very large including limestone and flint, sanded and fine smooth surface. Situla. evidence of finger sloping, curious dull, dark greymatt surface interior and part of exterior, cabled rim made by diagonal slashing, well defined neck and shoulder, rim slightly everted. Also part of lower body and base, well beaded, uneven, very thick core section, burnt.

(34). Buff, burnt core, med thick, gritted and slightly sanded, fine smooth no shoulder, upright, rim slashed vertically across.

(35). Very large fragt stone , largely burnt dark grey and very well burnt core and sooty interior, thick in section, very hard, few grits well sanded, smooth texture, not polished, slight neck, rounded shoulder rim swells out, broad and flat, slight evidence of finger shaping, heavily scored above the shoulder after firing but no definite pattern as at Jacks Hill (PPSEA 1931) or Holwell (Applebaum.